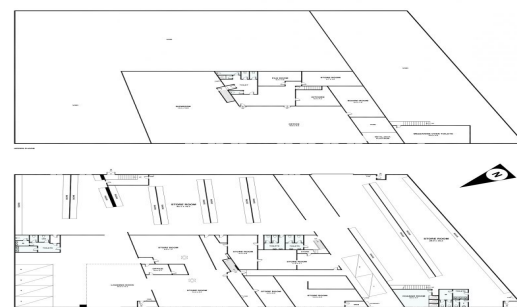


3-5 George Street, Leichhardt



, Leichhardt NSW 2040

SIMPLY AMAZING

Charming character filled warehouse and amazingly renovated air conditioned office, with all the lavish appointments. Two street access to George Street and Flood Street. Ideal for a warehouse, showroom and office head quarters. Walking distance to Lewisham Railway Station and 100 meters to Parramatta Road, Leichhardt. Very realistic rental on offer, no work to be done and just move straight in.

Offices
FOR LEASE

522sqm