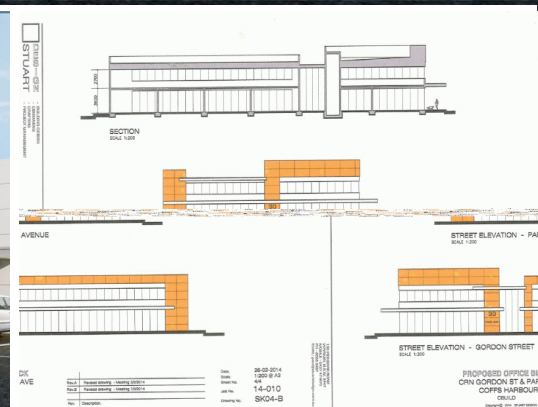


30 PARK AVE, COFFS HARBOUR



## Ground Floor/30-32 Park Avenue, Coffs Harbour NSW

### LEASED BY LJ HOOKER COMMERCIAL

A new two storey commercial building is to be erected upon the above site which occupies a busy, high profile CBD location on the corner of Gordon Street and Park Avenue.

Completion is due late 2017.

This is an amazing opportunity for businesses to lease brand new premises in the burgeoning Coffs Harbour CBD.

Occupants will enjoy a high standard of accommodation with excellent natural light and a prime CBD position.

This high quality building will accommodate ground floor shops/office suites plus first floor offices.

The ground floor accommodates an approximate net lettable area of 841m<sup>2</sup>.

Onsite car parking for 45 vehicles is provided over two levels, with

Offices

FOR LEASE

841sqm