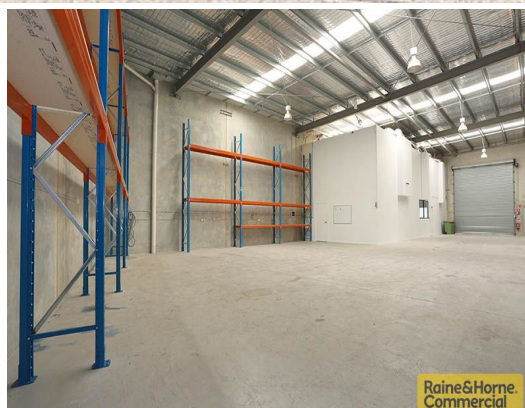




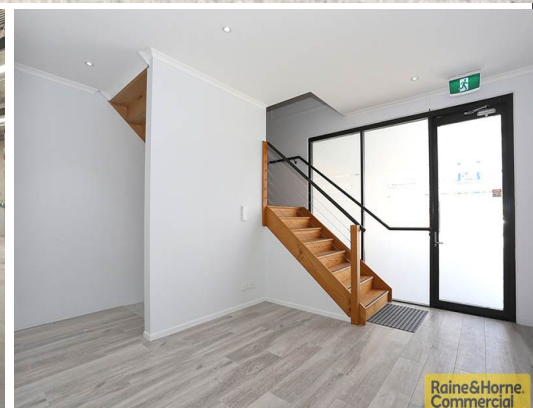
**Raine&Horne.
Commercial**



**Raine&Horne.
Commercial**



**Raine&Horne.
Commercial**



**Raine&Horne.
Commercial**

2/45 Neumann Road, Capalaba QLD 4157

460sqm Modern Duplex Unit with Quality Corporate Fitout

This quality tilt panel industrial duplex unit has extensive features and is sure to please the most discerning tenant.

- * 80sqm (approx) ground floor a/c reception and office/meeting room
- * 120sqm (approx) a/c mezzanine - 4 offices, boardroom and control room
- * 260sqm (approx) clear span insulated warehouse with plenty of three phase power
- * Own amenities - kitchenette and toilet on both levels
- * Four undercover car parks and four open car parks
- * Easy truck access direct to electric container height roller door
- * Secure compound with remote control electric gate
- * Excellent street exposure and pylon signage on Neumann Road
- * Ideally suited for manufacturing or warehousing

All pricing exclusive of GST
For further information

Industrial
FOR LEASE

460sqm

**Raine&Horne.
Commercial**

Colin Tucker

0411 534 023
colin@RnHcommercial.com.au