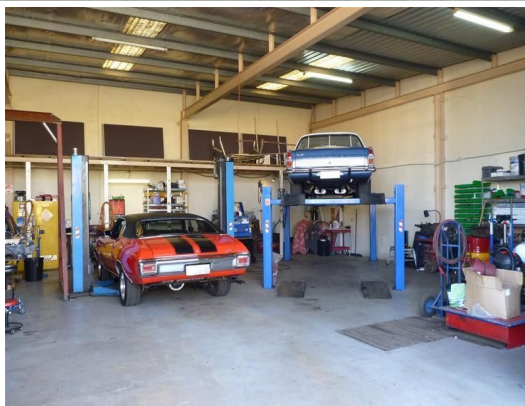
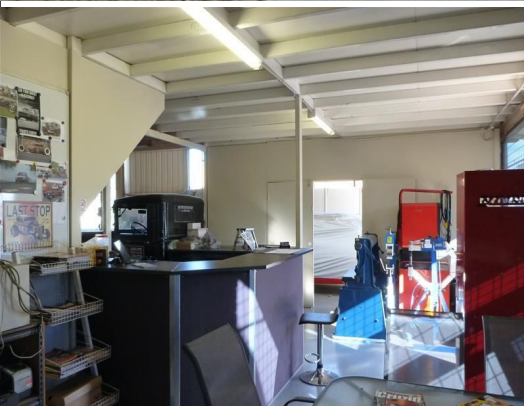




**firstnational**  
COMMERCIAL | Giles Jones



**12 Lefroy Avenue, Midland WA 6056**

## Midland Factory for Lease

Available for lease from the 1st of November 2013 is this 280m2 high truss factory with features including perimeter fencing, security alarm, small reception/office area, ample onsite parking and both front & side access to the factory area. The factory boasts a central and accessible location on Lefroy Ave, situated just off Great Eastern Highway and a stones throw from the Bellevue Industrial Area

- 280m2 high truss factory
- Front & side access
- Fully fenced & alarmed
- Reception/office area
- Ample onsite parking
- Central location

Offices  
FOR LEASE

280sqm



**firstnational**  
COMMERCIAL | Giles Jones

### Cambell Giles

0418 936 544  
cambell.giles@gilesjones.com.au