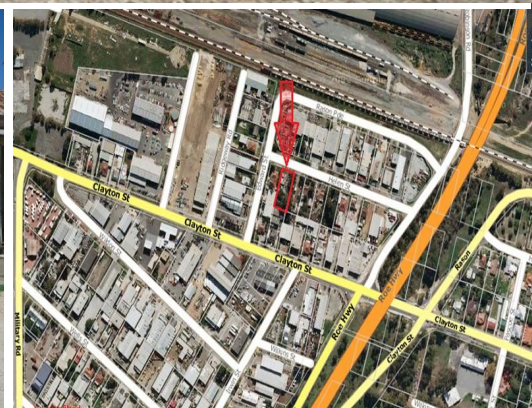
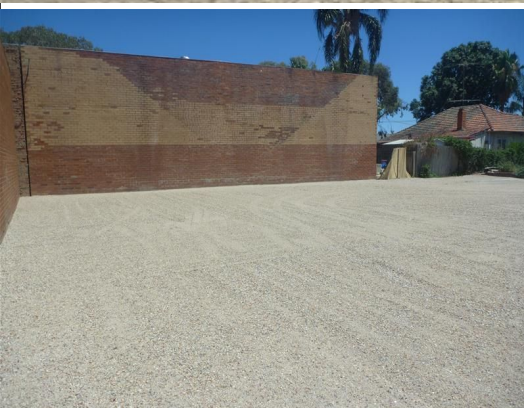




firstnational
COMMERCIAL | Giles Jones



63 Helen Street, Bellevue WA 6056

HARDSTAND FOR LEASE - NO GST

If you are after that extra yard space this 1012m2 block in Bellevue's General Industrial Area should tick the boxes; Fully fenced with approximately 880m2 of hardstand and a small house suitable for dry storage. This properties' close proximity to arterial roads Roe & Great Eastern Highways gives easy access to neighbouring areas

1012m2 land area
880m2 approx yard
Fully fenced
Power & water
Toilet
General Industrial area

For more information, c

Industrial
FOR LEASE

100sqm



firstnational
COMMERCIAL | Giles Jones

alex.taylor@gilesjones.com.au