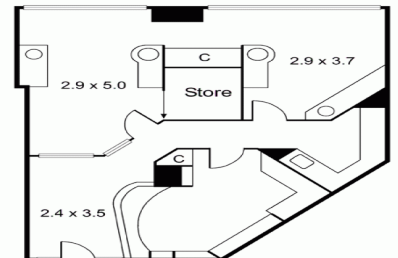


137/1 Queens Road, MELBOURNE



ALL INFORMATION CONTAINED HEREIN IS GATHERED FROM SOURCES WE BELIEVE TO BE RELIABLE, HOWEVER WE CANNOT GUARANTEE

137/1 Queens Road, Melbourne VIC 3000

Medical Investment -5 year lease - Circa 8% yield

Outstanding opportunity to secure this medical suite in this prestigious development.

- ?? Medical Tenant
- ?? Lease | 5 years
- ?? Options | 5 years
- ?? Rental | \$34,608 pa net
- ?? Fixed 3% increases
- ?? Building area | 56m2 approx.

Offices
FOR LEASE

56sqm

Ray White®

Brett Diston

0439365532

brett.diston@raywhite.com