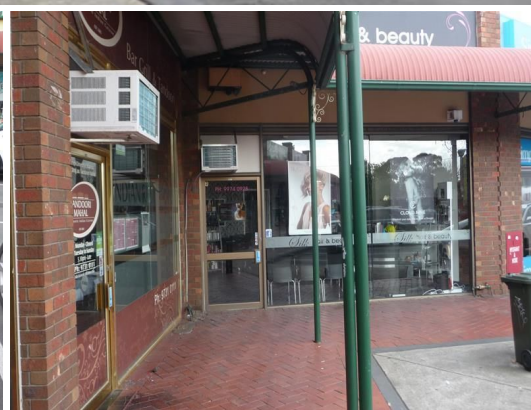




firstnational
COMMERCIAL | Westwood



7/51-54 Synnot Street, Werribee VIC 3030

Retail Shop in Popular Dairy Plaza

Great opportunity to purchase this investment property.
Good off street parking. Steady daytime and evening trade
Central to many offices, other shops & businesses with employees and customers adding to the bustle of this part of town and providing potential trade for Shop 8.
Only one street back from the CBD, Banks and Restaurants
Some 13 shops in total including 7-11 with fuel bowsers, Bakery, Licensed Grocer & others.

NOT TO BE MISSED

Call Peter Nation for more details: 0411 088 775

Retail
FOR SALE

75sqm



firstnational
COMMERCIAL | Westwood

Peter Nation

0411 088 775

commercial@westwoodfn.com.au