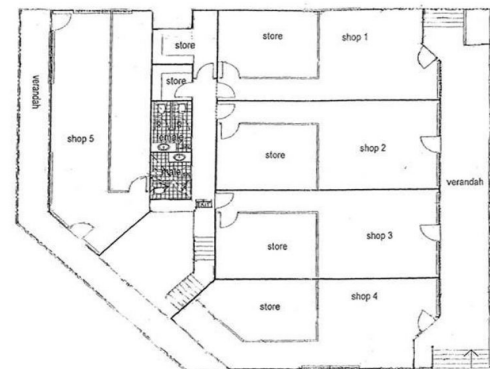




firstnational
COMMERCIAL



9 Short Street, Broome WA 6725

Great Value in Any Market Conditions

Retail/Office complex with high exposure opposite Paspaley Plaza Shopping Centre and adjoining public carpark.

Ideal for an Owner/Occupier or Astute Investor this two level property includes 275sqm of lettable ground floor retail/ commercial space plus a modern spacious upstairs residence.

The first floor residence includes extensive balconies with views over Chinatown plus 3 bedrooms and 2 bathrooms. It is currently leased at \$800 per week until July 2015.

The 275sqm ground floor retail/commercial space includes common toilets and five tenancies all with data cabling, 3 phase power plus waste and fresh water plumbing. Approx 178sqm leased until October 201

Retail
FOR SALE

450sqm



firstnational
COMMERCIAL

Allan Griffiths

0419 922 000

griff@broomerealestate.com.au