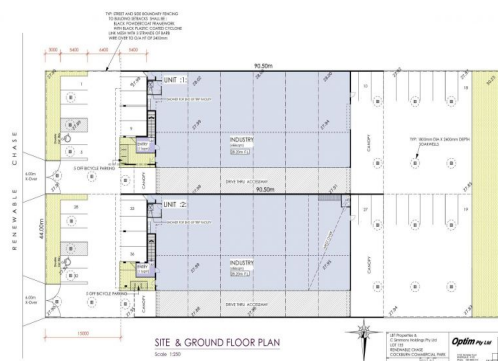


Artist impression



1 & 2/lot 155 Renewable Chase, Bibra Lake WA 6163

Coming Soon - 1,003sqm & 2,142sqm Office/Warehouse + Canopy

- First class design.
- Large rear yard - almost impossible to find.
- 282sqm* - 564sqm* additional canopy at the rear.

Construction commencing shortly on one of the last lots in award winning Cockburn Commercial business Park.

Ideally located close to Stock and North Lake Roads these 2 properties offered together or separately not only offer easy access to main arterial roads but Fremantle Port also.

Features Include

- Shower - end of trip

Industrial
FOR LEASE
\$149,785pa net each
1003sqm



Brodie Key

0403 552 809
bkey@burgessrawson.com.au