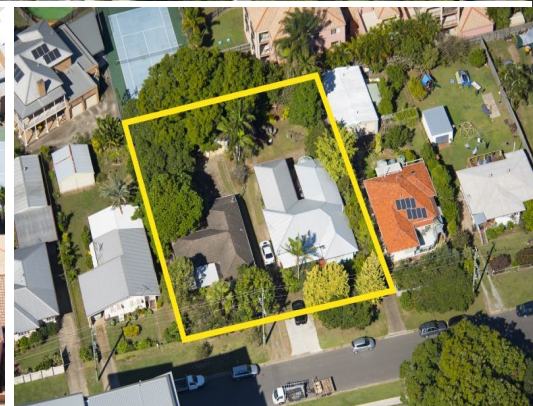
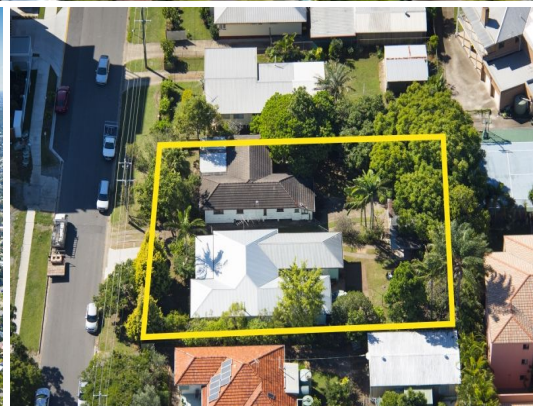




Outline Indicative Only



**27 And 31 Mascara Street, Upper Mount Gravatt QLD 4122**

**Approved Development Site - Partnership Split**

- Development Approval for 57 units
- Holding income
- 2 adjoining houses with a total land area of 1,396m<sup>2</sup>\*
- Walking distance to Westfield Garden City and public transport and within close proximity to Sunnybank Plaza and Griffith University
- Easy access to Pacific Motorway and Gateway Arterial

Land  
FOR SALE

Matthew Fritzsche 0410 435 891  
Tony Williams 0411 822 544

\*approximately



**Matthew Fritzsche**  
0410435891  
matthew.f@raywhite.com

**Tony Williams**  
0411822544  
tony.williams@raywhite.com