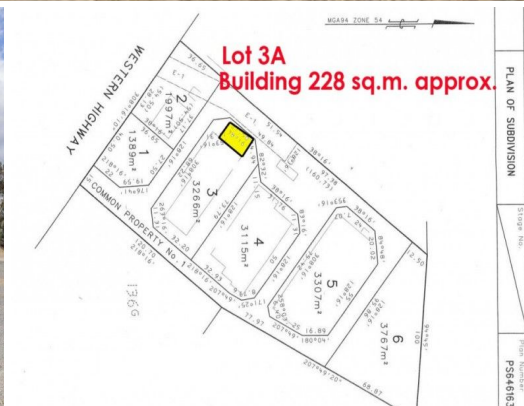




**first national**  
REAL ESTATE | Ararat



**3a/25-35 Horsham Rd, Stawell VIC 3380**

## FOR LEASE - Commercial Industrial warehouse Building

Large Commercial Industrial Warehouse Building.  
High clear span Building, around 228 sq.m approx  
Concrete slab Floor  
Large roller door access & high clearance  
Ideal for light manufacturing, workshop, Depot or warehouse  
Property frontage to Western Highway

Retail  
FOR LEASE  
\$  
228sqm



**first national**  
REAL ESTATE | Ararat

**Phil Clark**

0417 509 025

philip@fnarat.com.au