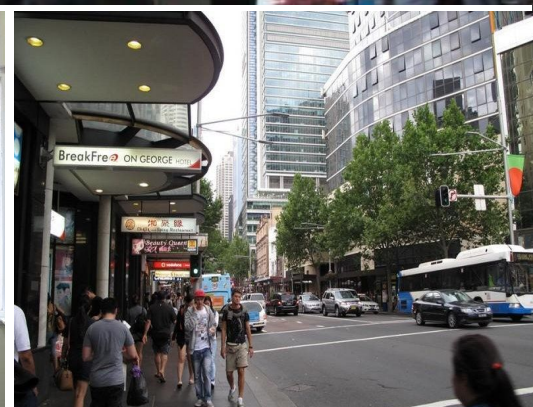
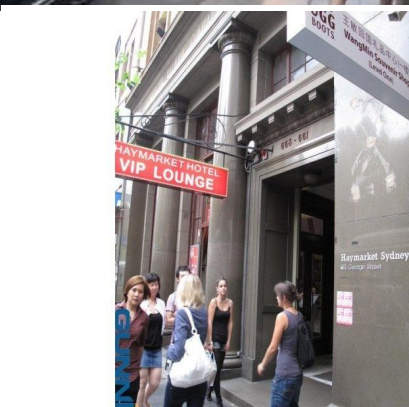


GUNNING



Suite 205/661 George Street, Sydney NSW 2000

Great Small Office Space - Ready to Go!

Located on George Street and close to Central Station.

This office would suit perfectly a 'one man' business and it could suit a 2-3 people company.

Great natural light.

Long windows.

High ceilings.

Communal female and male toilets in the building.

For more inf

Offices

FOR LEASE

19sqm

GUNNING

Gunning Real Estate

info@gunningre.com.au