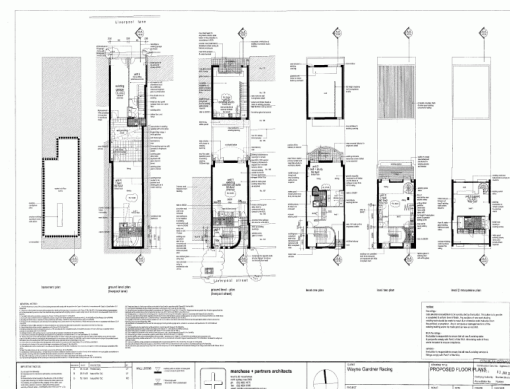


# GUNNING



2/220 Liverpool Street, Darlinghurst NSW 2010

## Marchese Architects designed work areas

Unique home style work areas

Located in the heart of Darlinghurst, 100m from Oxford Street and in close proximity to East Sydney.

Prestige finishes

All commercial I.T. requirements accessible.

Live & work

Unit 1 50.8sqm

Unit 2 55.3sqm

Unit 3 80.7sqm

Unit 4 59.5sqm

Unit 5 56.8sqm

Offices

FOR LEASE

55sqm

# GUNNING

Gunning Real Estate

info@gunningre.com.au