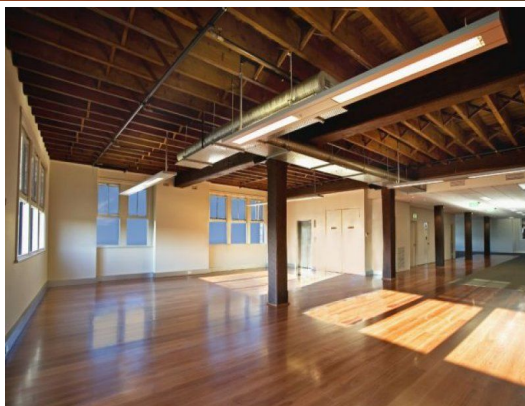
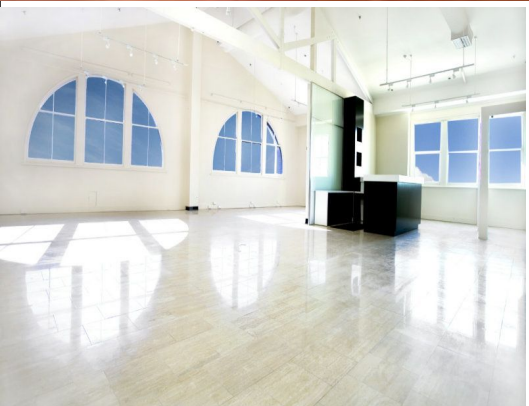


GUNNING



22 City Road, Chippendale NSW 2008

DOING BUSINESS IN STYLE - Whole floor offices available in a metuculously refurb

A 5 level heritage building which has been meticulously refurbished, in a manner which has preserved the charm and charisma of its heritage together with modernising all the services which have been upgraded or replaced.

The building comprises of:
1 lift, each floor individually lockable.
5 security car spaces
OR in one line 1,501sqm (approx.)
Exposed and ducked air

Offices
FOR LEASE

372sqm

GUNNING

Daniel Gunning

0413 051 235

danielg@gunningre.com.au