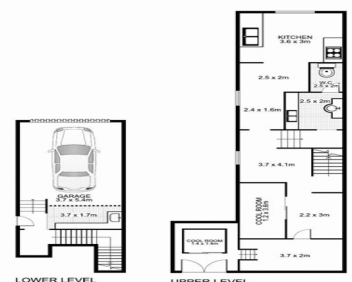




32 Bayswater,  
POTTS POINT



## 1/32 Bayswater Road, Potts Point NSW 2011

### Inner City Commercial Kitchen

Gunning commercial is pleased to offer for lease this highly sought after commercial kitchen located on Bayswater Road in Potts Point.

The property is situated in the heart of the Potts Point commercial precinct, moments from Kings Cross Station and approximated 2 kilometers from the Sydney CBD.

The kitchen is fitted with the following equipment:

- 3 x 2 door upright stainless steel Everest Freezers- (1000 liters each). Both in excellent working condition.
- 1 x brand new walk in freezer - 1.8 m x 1.8 m (4750 liters) with shelving, lights and safety bell
- 1 x standalone 2 burner gas stove

Leisure  
FOR LEASE

80sqm

# GUNNING

**Daniel Gunning**

0413 051 235

danielg@gunningre.com.au