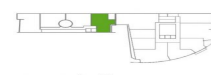


the avenue



134/10 Park Road, Hurstville NSW 2220

116sqm Corner suite

Gunning's is pleased to offer this open plan 116sqm commercial office in Hurstville.

The building is located next door to Westfield's and within close proximity to Hurstville Bus & Railway station. The property has Three (3) pedestrian street access from Park Road, Humphreys Lane and The Avenue. Access to the security parking and council 108 public parking space is via The Avenue entrance.

Features:

- # 116sqm open plan commercial
- # Two(2) security parking space
- # CCTV Security through building
- # Adjacent to Westfield

Offices
FOR LEASE

116sqm

GUNNING

William Gunning

0413 610 194

williamg@gunningre.com.au

James McKenny

0423 048 814

jamesm@gunningre.com.au