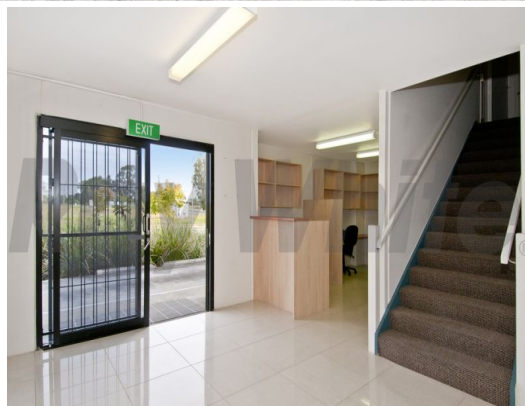




Outline Indicative Only



Outline Indicative Only



1/2 Gateway Court, Coomera QLD 4209

Liquidator's Sale

Under instructions from David Clout & Associates as Liquidators

- * Lot 1 on SP200421
- * Freehold warehouse/office in the Coomera marine industry precinct
- * 139m²* ground floor warehouse with 36m²* approved mezzanine office
- * Additional 40m* office mezzanine
- * Allocated car parking with ample visitor parking
- * Excellent exposure with dual street access
- * View by appointment
- * Open For Inspection, Wednesday 7th October, 4.00-4.30pm

*approx

Please contact the listing agent for more details by clicking on the link above.

Ray White has not indep

Industrial
FOR SALE

215sqm

Ray White®

Lisa Dunne

0420208891

l.dunne@rwsp.net