

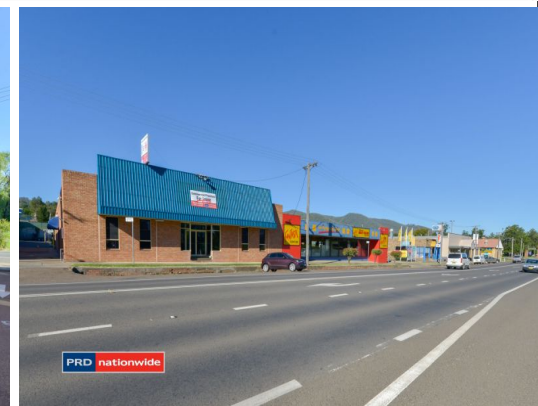
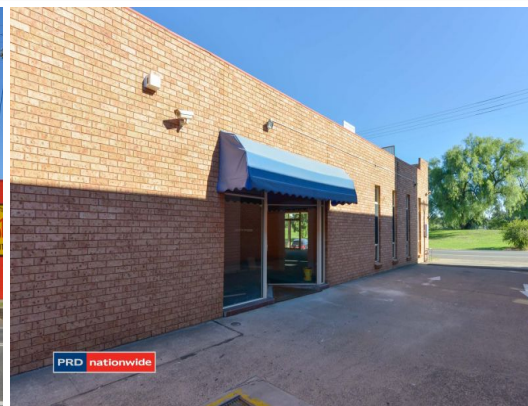
Commercial Space Available

Peel Street

Shop 1

Commercial Premises Available

Shop 2 - Leased



172 Peel Street, Tamworth NSW 2340

340m2 Left - High exposure

Rare opportunities to secure a 340m2 premises with high exposure onto Tamworth's main street is unheard of, with excellent access and carparking! This premises will suit any type of business model, and landlord is happy to hear your plans. Lease as is, or submit an expression of interest to revamp for your business needs. Rear of building has been leased, the front 340m2 available. Call Mark Sleiman today for any of your enquiries.

Retail
FOR LEASE

340sqm

Mark Sleiman

0411 544 603

mark@prdtam.com.au