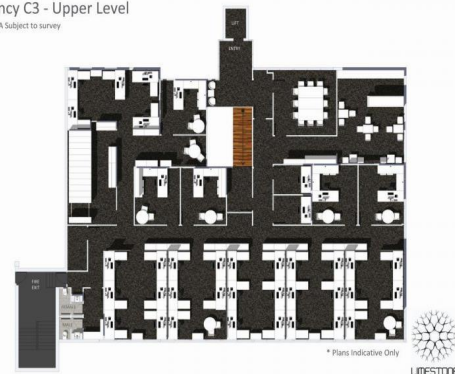




Tenancy C3 - Upper Level
497m² NLA Subject to survey



The Limestone Street Limestone Street, Ipswich QLD 4305

NEWLY REFURBISHED OFFICE SPACE WITH FIT OUT

- * Over 300 on site car parks.
- * Some of the largest commercial office floor plates in Ipswich.
- * Great signage exposure.
- * The property is at the gateway to the Ipswich CBD.
- * Areas available from 50m² - 2000m².
- * Good quality near new fitout in place.

Offices
FOR LEASE
Contact Agent
2000sqm