

7 Tenterden Road, Botany NSW 2019

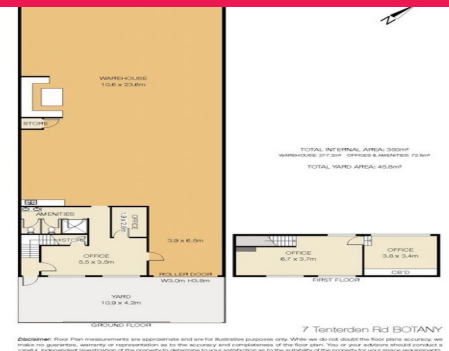
Freestanding Botany Factory

This freestanding building offers 350sqm of internal space and is located in the heart of Botany on Tenterden Road. Exceptionally close proximity to Port Botany Terminal and major link roads such as Foreshore Drive, Southern Cross Drive, Eastern Distributor and M1 & M5.

- Warehouse/Factory: 277.2 sqm
- Office & Amenities: 72.8 sqm
- Yard: 45.8 sqm
- Roller-door access
- Renovated bathrooms
- Parking available on-site

Industrial
FOR LEASE

277sqm



Ray White®

Alex Santelli

0403104146

a.santelli@nwccs.com