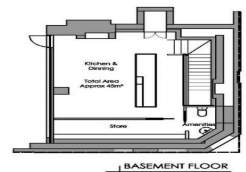


GROUND FLOOR

57 St Johns Road
Glebe NSW 2037
Total Area approx 175m²



BASEMENT FLOOR

57 St Johns Road, Glebe NSW 2037

Sensational Creative Office with Designer Fitout

This brilliant and efficient 175sqm office space is light filled from two sides and is the epitome of creative appeal and value.

The ground floor offers approx. 130sqm of open plan lettable area featuring 14 as new workstations, each with multiple data/phone points and power.

The lower ground floor offers approx. 45sqm currently configured as a boardroom with kitchen, bathroom, server room and additional storage areas.

Other features include:

* Data cabled throughou

Offices
FOR LEASE

175sqm