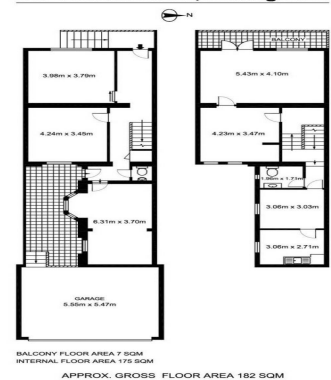


326 Victoria Street, Darlinghurst



326 Victoria Street, Darlinghurst NSW 2010

CREATIVE TERRACE WITH DOUBLE LOCK UP GARAGE SET OVER 182SQM

Boutique commercial terrace in the centre of trendy Victoria Street.
Located amidst Victoria Street cafes / restaurants, minutes from Kings Cross Station and Oxford Street

- Air conditioned throughout
- Ideal professional or creative use
- Double lock up garage
- Reception / meeting room / kitchenette / toilet facilities
- Partially fitted out but can be removed upon request

Available now

Offices
FOR LEASE

182sqm