



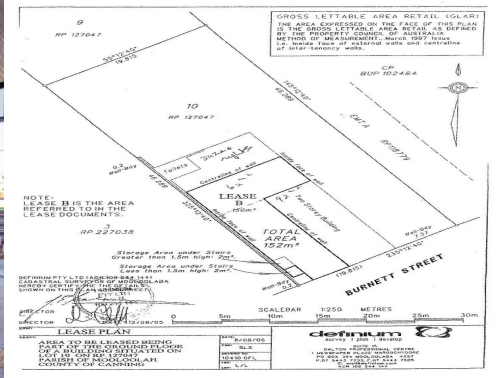
RayWhite



RayWhite



RayWhite



**2&3/90 Burnett Street, Buderim QLD 4556**

**\*\*\*RENT REDUCED\*\*\* Ground Floor Office/Retail/Consulting Premises For Lease | B**

\*\*\*RENT REDUCED\*\*\*

- Two tenancies for lease at 62m2 and 92m2 which can be combined
- Exclusive undercover outdoor area available
- Excellent corner exposure with ample natural light
- Access via three doors, ability to split or sub-let
- Located within bustling retail hub at the top of Buderim
- Great signage opportunities
- Low outgoings, no bod

Retail  
FOR LEASE

**Ray White**

**Emily Pendleton**

0402435446

emily.pendleton@raywhite.com