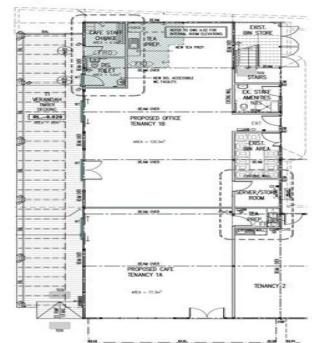




firstnational
COMMERCIAL



GROUND FLOOR PLAN
PROPOSED CAFE TENANCY 1A & OFFICE TENANCY 1B WORKS

1/27-29 Dampier Terrace, Broome WA 6725

High Tourist Exposure

This high profile Dampier Terrace location is adjacent to prominent pearl jewellery shops and galleries.

Featuring a promenade deck along one frontage and full height display windows, this strata premises is ideally suited to gallery/cafe, professional offices or tourism services. Facilities includes toilet, change room and kitchen waste facilities.

Why pay rent when you could pay off your own mortgage?

- Shire Rates Approx \$9,900 pa
- Water Rates Approx \$1075 pa
- Year Built 2011
- Strata Levies Approx \$

Offices

FOR SALE

\$1,195,000 + GST

210sqm



firstnational
COMMERCIAL

Allan Griffiths

0419 922 000

griff@broomerealestate.com.au