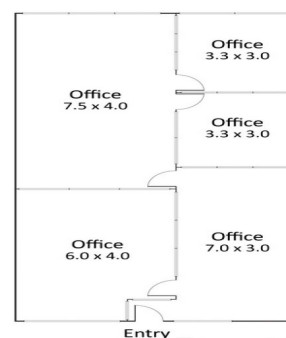




41E/190-200 Jells Road, Wheelers Hill



41e/190 Jells Road, Wheelers Hill VIC 3150

OFFICE ADJOINING WHEELERS HILLS SHOPPING CENTRE

- First floor office suite of 96m2 approx.
- Comprising glass partitioned office with reception area, boardroom, two private offices and open plan area
- Heating / cooling and shared amenities
- Two allocated car spaces plus ample customer parking
- Located in a corporate environment adjoining Wheelers Hill Shopping Centre
- Excellent location with easy access to Monash and Eastlink Freeways

\$26,900 per annum + GST + Outgoings

Ryan Amler 0401 971 622

Offices
FOR LEASE

96sqm

Ray White

Ryan Amler

0401971622

ryan.amler@raywhite.com