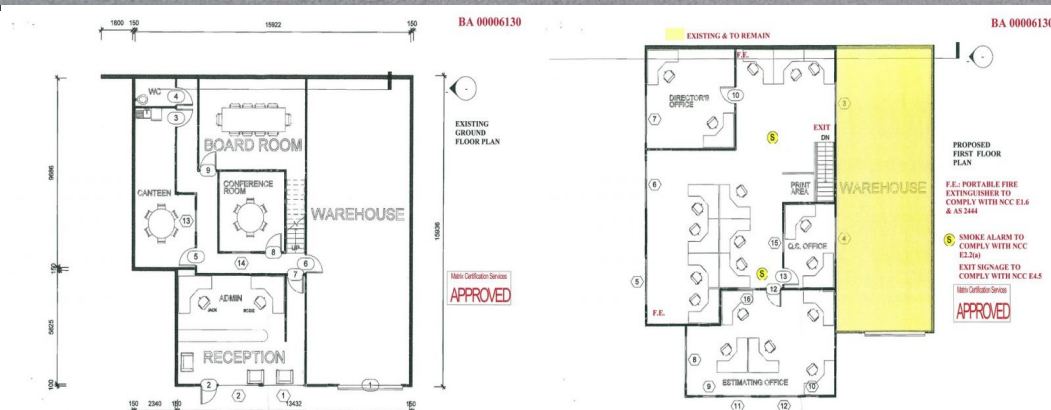




Outline Indicative



1/8-14 St Jude Court, Browns Plains QLD 4118

## Immaculate Office With Plenty Of Storage

- \* 467m<sup>2</sup>\* corporate style office with warehouse
- \* 352m<sup>2</sup>\* new air conditioned office over two levels
- \* 94m<sup>2</sup>\* of warehouse storage area
- \* 21m<sup>2</sup>\* undercover alfresco area
- \* 10Kw solar system in place
- \* 40ft\* container drop off area
- \* 30 plus common area car parks
- \* Minutes to Logan and Gateway Motorways
- \* Owner is extremely motivated
- \* Must present every offer
- \*approx

Please contact the listing agent for more details by clicking on the link above.

Offices  
FOR LEASE

467sqm

# Ray White®

**Shay Fairhurst**

0405 558 865

s.fairhurst@rwsp.net

**Shaun Robinson**

0403 416 419

s.robinson@rwsp.net