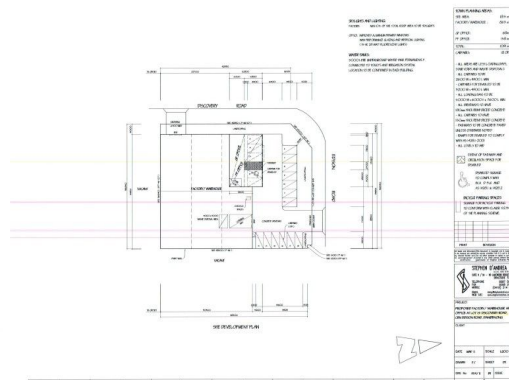


1001145 Lot 15 Discovery Rd, Dandenong



Lot 15 Discovery Road, Dandenong VIC 3175

CONSTRUCTION TO COMMENCE SOON!

Located in the premium Innovation Park Estate with excellent access to the M1, Eastlink and Princes Highway this property includes:

- + 1st Office/ground floor showroom/office
- + Possible stamp duty savings
- + 865sqm clearspan warehouse
- + 226sqm office
- + Corner location
- + 8.2m clearance
- + 2 RSD'S
- + 18 x car parks including 5 under cover
- + 2 x crossovers
- + Complete with working drawing to construct 1,091sqm Office/Warehouse

Industrial
FOR SALE
\$1,372,000
1091sqm



Matthew French

0432 582 669

matthew@richardsonfrench.com.au

Jeffrey Richardson

0418 328 101

jeffrey@richardsonfrench.com.au