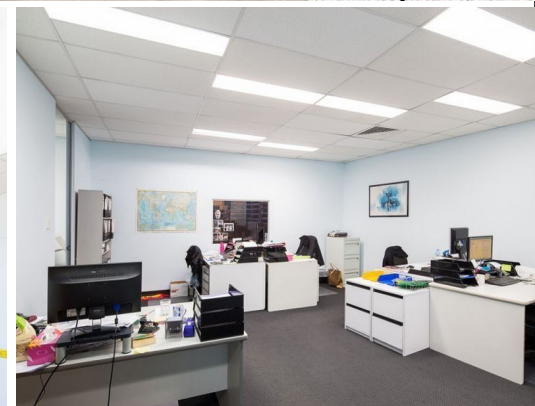
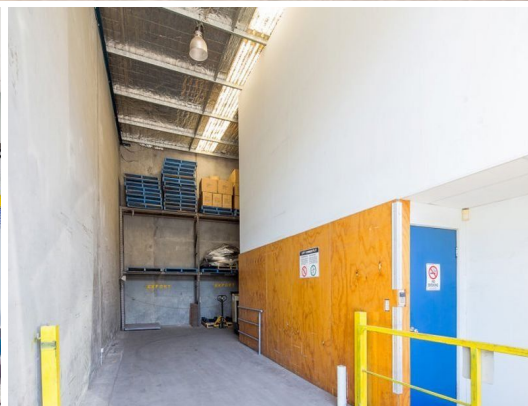




Feb 15

www.rpdata.com



1/13-15 Burrows Road, Mascot NSW 2020

## Industrial Office & Warehouse

The property is situated on busy Burrows Road South, with close proximity to major roads such as Princes Highway and Gardeners Road in addition to Sydney Airport and Port Botany. The unit combines high quality office fit out in addition to high clearance, functional warehouse.

Key features include:

- ? Ideal company headquarters
- ? Premium position at front of estate
- ? Small high clearance warehouse, roller door
- ? Quality office fit out for 24 staff
- ? Amenities/kitchenette on both levels
- ? Three phase power
- ? Two car spaces

Offices  
FOR LEASE

224sqm

PROPERTY   
The place for workspace.

**Dimitrios Franze**

0406 558 855

dimitrios@oxfordagency.com.au