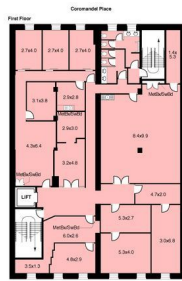




102 - 106 Gawler Place Adelaide
Ground Floor
ESTIMATED TOTAL NETT LETTABLE AREA
Basement 251 sq. metres
Ground Floor 365 sq. metres
First Floor 390 sq. metres
Second Floor 390 sq. metres
Total Net L.A. 1,476 sq. metres
G (Square in metres) 5



102 - 106 Gawler Place Adelaide
First Floor
ESTIMATED TOTAL NETT LETTABLE AREA
Basement 251 sq. metres
Ground Floor 365 sq. metres
First Floor 390 sq. metres
Second Floor 390 sq. metres
Total Net L.A. 1,476 sq. metres
G (Square in metres) 5



102-106 Gawler Place, Adelaide SA 5000

Portion Leased- Space Still Available!

102 - 106 Gawler Place is situated between Grenfell and Pirie Street in the heart of the Adelaide CBD. Capital City Zone offers generous zoning flexibility.

Ground floor area may be converted to various types of retail whilst the first floor lends itself to a commercial use. Coromandel Place provides rear lane access to the Ground floor tenancy. Each level is self-contained with bathroom amenities.

Lessor willing to remove all wall partitions to provide a clear span tenancy.

- > Ground floor area of approx 365 sqm.
- > First floor area of approx 390 sqm.

Retail
FOR LEASE

757sqm