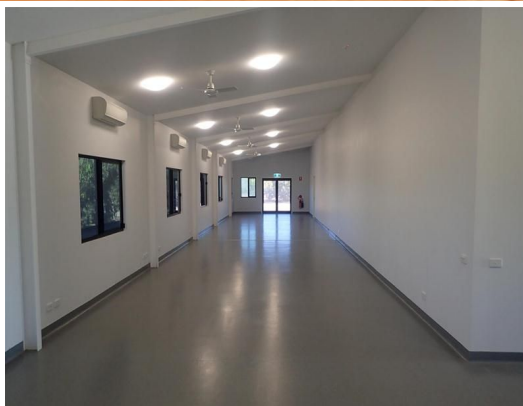




firstnational
COMMERCIAL



28 Mavis Road, Bilingurr WA 6725

Quality Warehouse with Ample Office/Showroom Space

Located on a corner block with access from each street, this practical warehouse presents well.

- Large Concrete Hardstand
- High Access Electric Roller Doors
- Warehouse approx 307sqm
- Office/Showroom 150sqm
- Double Gates from Mavis & Gwendoline Crossing

Industrial
FOR LEASE

457sqm



firstnational
COMMERCIAL

Allan Griffiths

0419 922 000

griff@broomerealestate.com.au