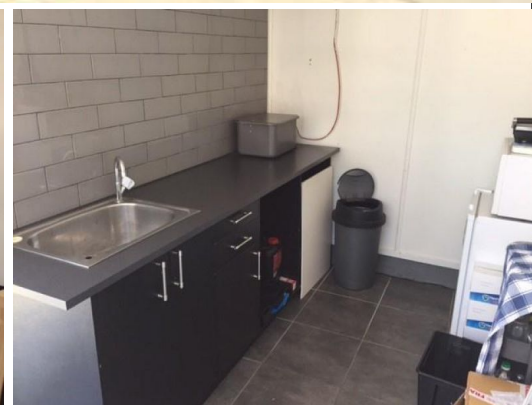
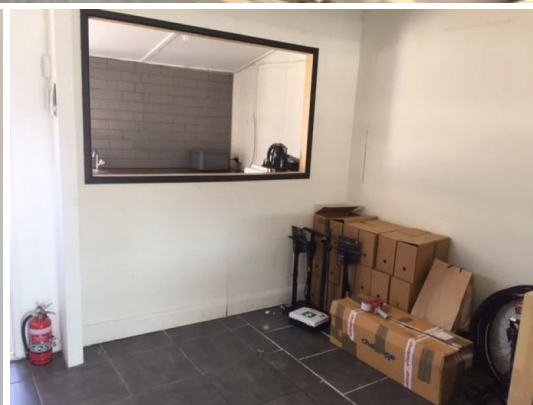




firstnational
COMMERCIAL



1293 Logan Road, Mount Gravatt QLD 4122

MAIN ROAD EXPOSURE IN STRONG BLOCK

Situated right in the middle of popular Mt Gravatt block adjoining strong tenancies is this great retail space/office space with rear access and 2 car parks.

Just to top it off it also has further storage available at additional cost.

Retail
FOR LEASE

80sqm



firstnational
COMMERCIAL

Anthony Conias

0408 266 427

anthony.conias@metrofn.com.au