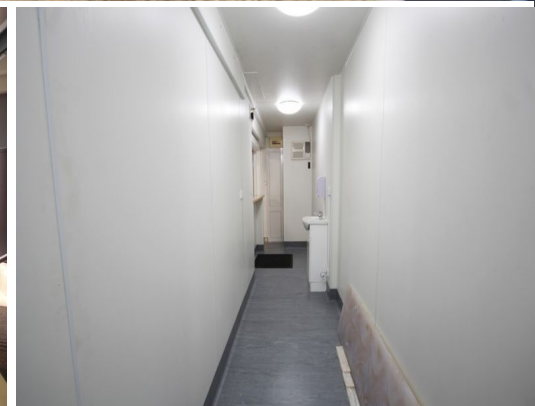
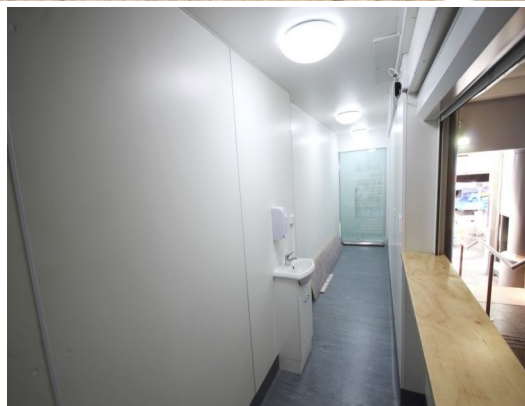




Outline Indicative



1/20 Orchard Ave, Surfers Paradise QLD 4217

## Small Kiosk Facing Orchard Avenue!

This property would suit a variety of tenants from computer and phone repair shop, tobacconist, juice bar etc. It is located directly under the Promenade Apartments, this location services a large catchment of students, backpackers and office staff. Surrounded by tenants such as Ray white, Gold Coast Learning Centre, La Porchetta, Paradise Currency Exchange. Do not miss out on this rare opportunity!

- \* 9m2\* Brand new kiosk
- \* New fit out and air conditioned
- \* Electric roller shutter
- \* Frontage and signage to Orchard Avenue
- \* Flexible lease term

Retail  
FOR LEASE

9sqm

# Ray White®

Shay Fairhurst

0405 558 865

s.fairhurst@rwsp.net