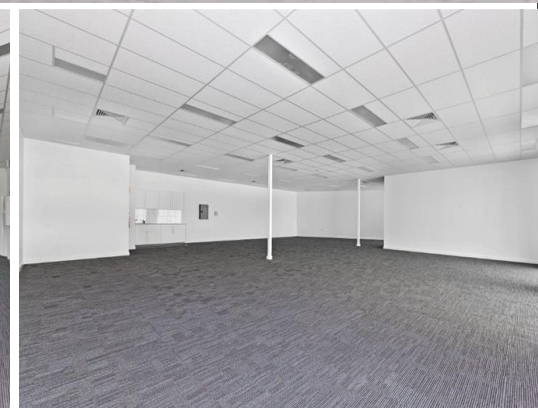




firstnational
COMMERCIAL



11/1311 Ipswich Road, Rocklea QLD 4106

BRAND NEW OFFICE

A Grade.
High Ceilings.
Car park ratio 1:35 m2.
Ducted Air-Conditioning.
Natural light.
Affordable price.

80% loan to value ratio available (Conditions Apply).

Offices
FOR SALE
\$1,080,000
299sqm



firstnational
COMMERCIAL

Jordan Brown

0407 039 553

jordan.brown@metrofn.com.au