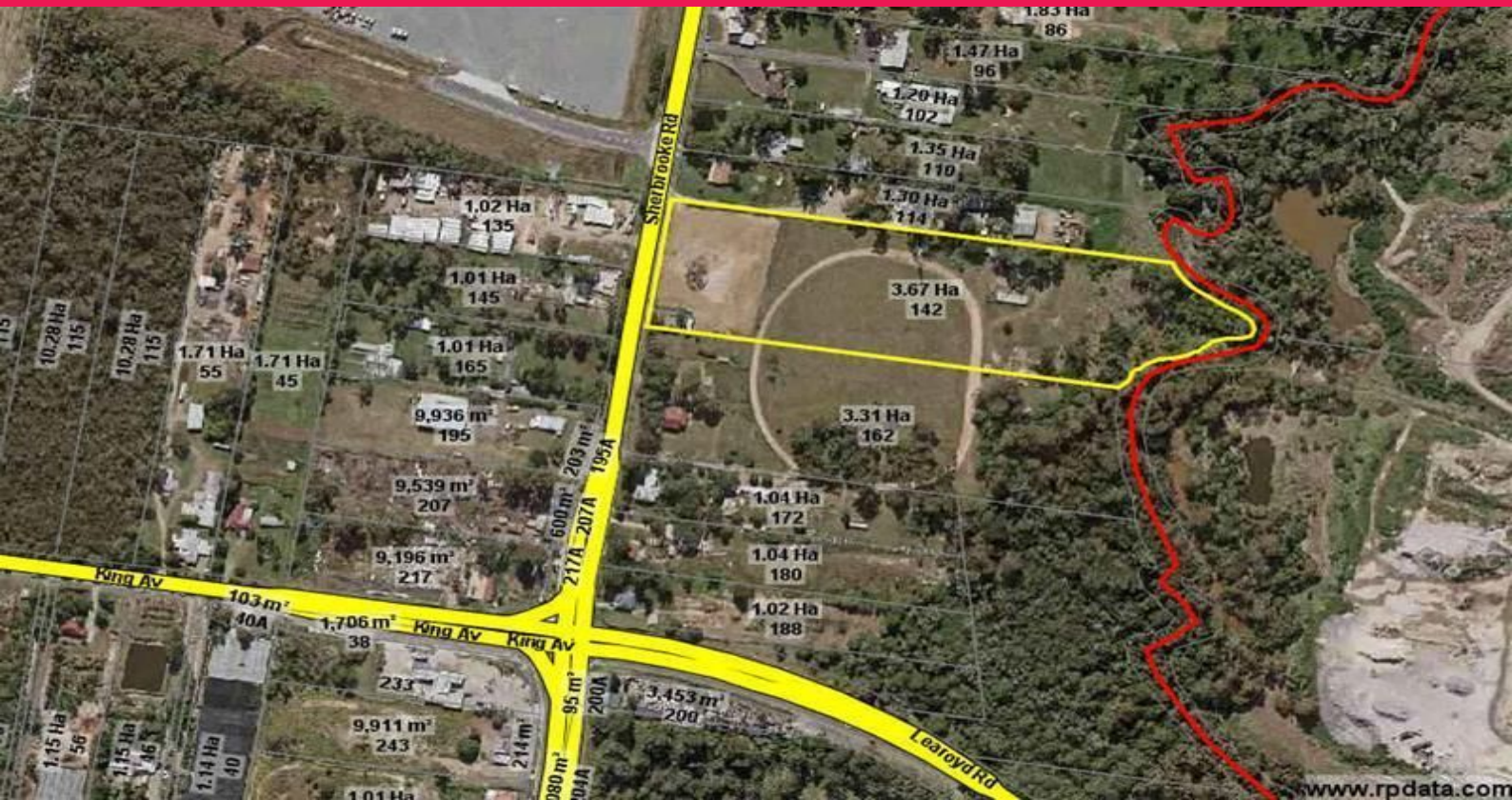




firstnational
COMMERCIAL



142 Sherbrooke Road, Willawong QLD 4110

Large Industrial Site With Holding Income

- 3.67 ha of level industrial site
- House, shed, large hardstand area with holding income
- Currently use as storage & transport yard
- Located in Lower Oxley Creek Neighbourhood Plan

Showrooms/bulky Goods

FOR SALE

Expressions of Interest

130sqm

With a number of large scale developments in the surrounding areas, this property is in a prime location to become another industrial precinct in Willawong



firstnational
COMMERCIAL

Hiep Nguyen

0414 311 262

hiepn@metrofn.com.au