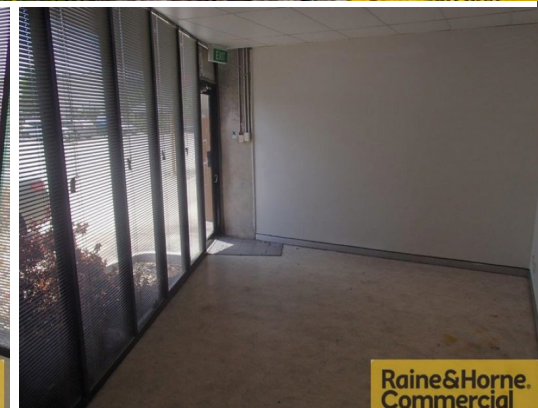




**Raine&Horne.  
Commercial**



**Raine&Horne.  
Commercial**



**Raine&Horne.  
Commercial**

**1/120 Gardens Drive, Willawong QLD 4110**

## Modern, Functional & Secure

- \* 423sqm concrete tilt panel unit offering excellent presentation
- \* Fully fenced and secure complex of only three units
- \* 323sqm of clear span warehouse with up to 7m internal height
- \* Access via a single electric container height roller door
- \* Rear roller door offers good air flow & ventilation
- \* 100sqm of air-conditioned office space over two levels
- \* Complex has large concrete apron for easy truck access
- \* Ability to drop 20ft container in front of your roller doors
- \* Well located complex in popular industrial precinct
- \* Only minutes from Beaudesert Rd & access to major arterials
- \* This opportunity is not to be missed!

Industrial

FOR LEASE

423sqm

**Raine&Horne.  
Commercial**

**Michael Cars**

0423 188 698

michael@RnHcommercial.com.au

**Wayne Newberry**

0408 723 023

wayne@mhcommercial.com.au