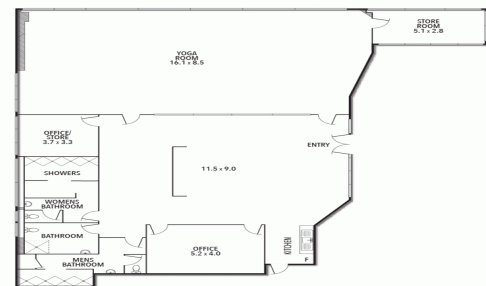


LEVEL 1, C & D/ 501-509 HIGH STREET, PRESTON



501-509 High Street, Preston VIC 3072

## MUST BE LEASED - ALL OFFERS CONSIDERED

Rare opportunity to occupy corner office space in Preston's thriving central business district. The property is superbly located with great exposure to High Street, a car park at rear and walking distance to Preston Station for easy accessibility for staff and clientele.

- 330m<sup>2</sup> approximately
- Flexible lease terms
- Suitable to a range of uses (STCA)
- Zoning | Commercial 2

Offices  
FOR LEASE

330sqm

# Ray White®

**Kristian Etherington** **Cameron Barber**

0400 409 833

0431 176 786

kristian.etherington@raywhite.com

cameron.barber@raywhite.com