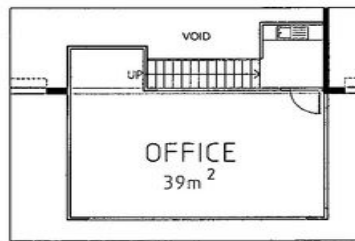


GROUND FLOOR



MEZZANINE

FINISHES

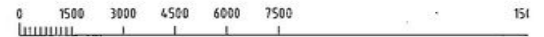
FLOORS:
MAIN - CONCRETE
MEZZ - CARPET
WC/DWC - TILE

WALLS:
MAIN - PAINT
MEZZ - PAINT
WC/DWC - TILE & PAINT
KITCH. SPLASH BACK - TILE

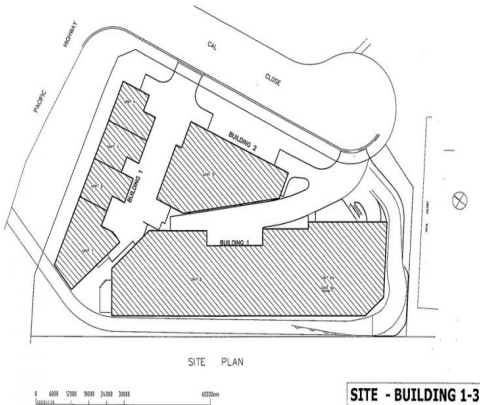
INTERNAL DOORS:
- PANEL,
PAINT FINISH

ROLLER SHUTTER
- METAL FRAME, MANUAL
AND ELECTRIC DRIVE

SERVICES:
- TELECOMMUNICATION
- ELECTRICAL 3ph.
- HOT WATER



BLDG 1 - UNIT 2



SITE - BUILDING 1-3



, Somersby NSW 2250

SOLD

Somersby Industrial Estate is located within Somersby's Industrial precinct situated just off the M1.

Being only 35 minutes drive from Wahroonga along the M1. This is a great opportunity to join the expanding Central Coast industrial market and a logical choice for any astute enterprise operator or investor.?

Surrounded by long established national and international businesses of varying size the flexibility and easy access to the M1 will make this estate one of The Central Coast most sought after industrial developments.

- Quality and functional design
- Areas range from 157sqm to 3331sqm
- High clearance wareho

Industrial
FOR SALE

159sqm

Joe Parisi

0437 140 414
joseph@fndy.com.au