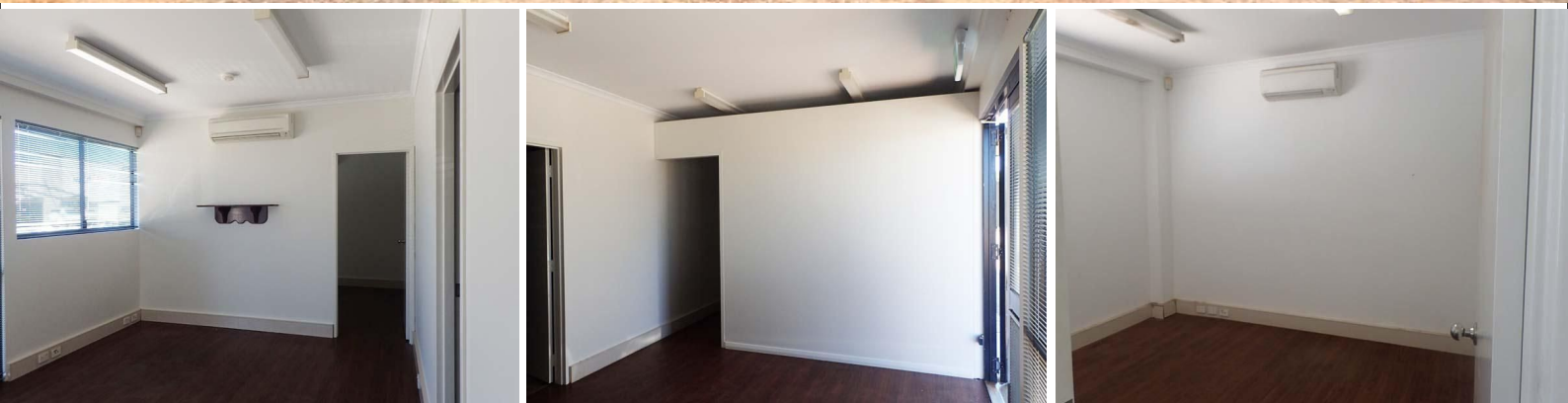




firstnational
COMMERCIAL



8/274 Port Drive, Minyirr WA 6725

Reduced! Quality Office Space and Warehouse in the Port Precinct

This property is perfectly situated near the Port and industrial areas in Broome. With office space, warehouse facility and yard space, this property has it all.

The Property Includes:

- Air conditioned office with reception
- More office on mezzanine with full kitchen
- 200 sqm warehouse with high access doors
- Toilet facilities
- 460 sqm fenced yard
- Outgoings \$11,960 + GST per annum (approx)

Industrial

FOR LEASE

\$25,000 + GST per annum

200sqm



firstnational
COMMERCIAL

Amanda Raffan

0419 008 440

commercialman1@broomerealestate.com.au

Allan Griffiths

0419 922 000