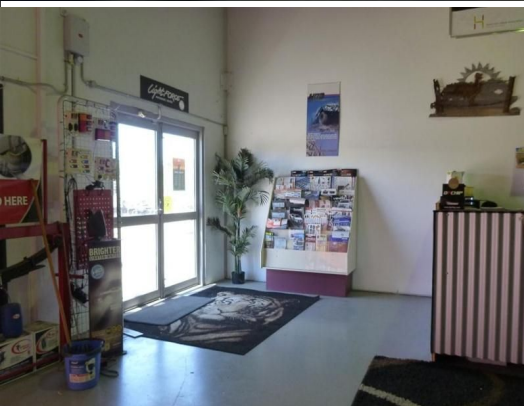




**firstnational**  
COMMERCIAL | Giles Jones



2/34 Robinson Road, Bellevue WA 6056

## NEAT WAREHOUSE GOOD PARKING

This warehouse unit has neat presentation and the benefit of a few extra features. The General Industrial zoning of this site gives you plenty of options.

187 square meter floor area  
Electric roller door  
5 parking bays  
General Industrial zone  
Close to major road networks  
(Measurements approx)

Industrial  
FOR LEASE

187sqm



**firstnational**  
COMMERCIAL | Giles Jones

**Cambell Giles**

0418 936 544

[cambell.giles@gilesjones.com.au](mailto:cambell.giles@gilesjones.com.au)

[alex.taylor@gilesjones.com.au](mailto:alex.taylor@gilesjones.com.au)