



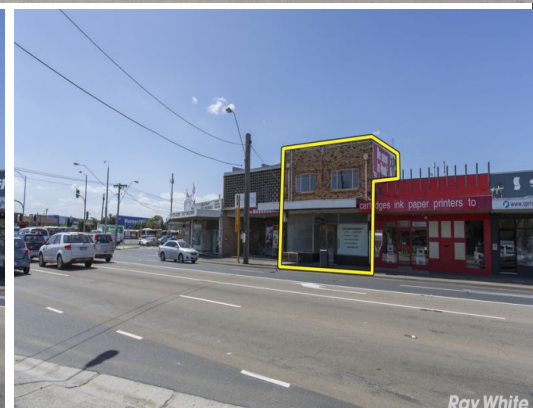
Ray White



Ray White



Ray White



Ray White

676 Warrigal Road, Oakleigh South VIC 3167

RENOVATE, OCCUPY, DEVELOP OR INVEST ? THE CHOICE IS YOURS!

- Total land area 258m² approx
- Total building area 187m² approx
- Including retail/office area 60m² approx
- Lock up garage
- ROW
- Three bedroom residence.
- Ample council parking
- Commercial 1 Zoning (C1Z)

Paul Rizzo - 0418 688 888
George Kelepouris - 042

Retail
FOR SALE

187sqm

Ray White

Paul Rizzo

0418 688 888
paul.rizzo@raywhite.com