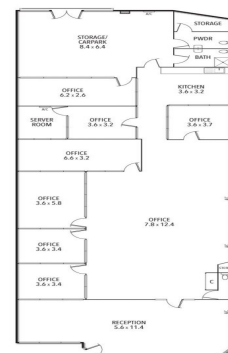




308-310 SYDNEY ROAD, COBURG



308-310 Sydney Road, Coburg VIC 3058

## High Exposure Opportunity

This property offers a unique chance to occupy unique, flexible commercial space in one of Melbourne's booming growth corridors. The property can be used for retail, office, showroom, and a variety of other uses (STCA). The property positions itself superbly with ample surrounding car parking and close proximity to the Coburg Train Station.

- 398m2 approx.
- Office & kitchenette amenities
- Flexible lease terms
- Onsite car parking

Retail  
FOR LEASE

398sqm

## Ray White®

**Kristian Etherington**

0400 409 833

kristian.etherington@raywhite.com