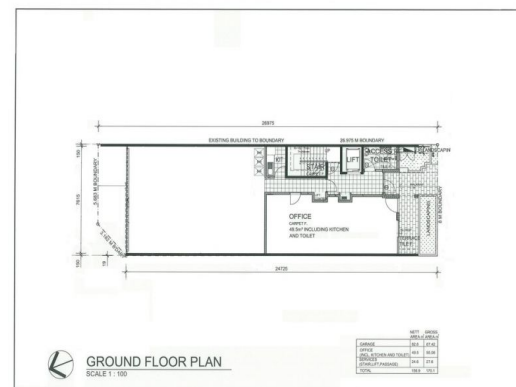




* - Outline is indicative only



1/68 Wittenoom Street, East Perth WA 6004

Ground floor property with a range of potential uses

Competitive pricing! Ray White Commercial (WA) is pleased to exclusively present 1/68 Wittenoom Street, East Perth for LEASE.

Potential uses include (STCA): - medical consulting rooms - office - training centre - retail outlet/shop

RENT: \$11,000 per annum (\$220m2)

OUTGOINGS: \$3,926 per annum (approx.)

PARKING: \$150 a month per bay

This prime commercial space consists of the following:

- Air conditioning and alarm system
- Well maintained

Offices
FOR LEASE

49.5sqm

Ray White.

Tom Jones

0478 771 117

tom.jones@raywhite.com

Stephen Harrison

0421 622 777

stephen.harrison@raywhite.com