



**37 Hargreaves Street, Edmonton QLD 4869**

## Ideal Warehouse 540 m2 - South Cairns

Situated at 37 Hargreaves Street, Bentley Park, this property has Bruce Highway exposure with 35,000 cars passing daily. With a six metre clearance, a width of 15 metres and length of 36.4 m2. The warehouse has two small internal offices and a side lean to of approximately 100 m2.

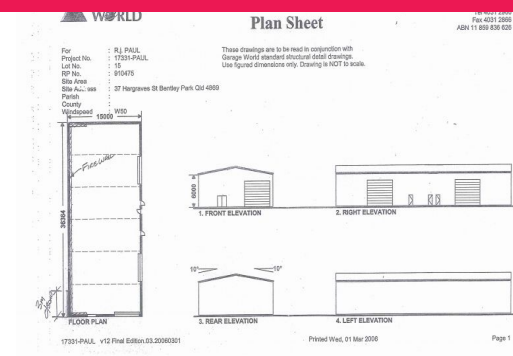
The yard is fully concrete sealed with a wash bay underneath the side lean to connected to a grease interceptor. Three roller doors and chain wire fencing surround the property.

Available now and priced right!

Contact: Exclusive agent Scott Green - Ray White Commercial Cairns for more information.

**Industrial  
FOR LEASE**

**540sqm**



**Ray White**

**Scott Green**

0740441111

commercialcairns.qld@raywhite.com