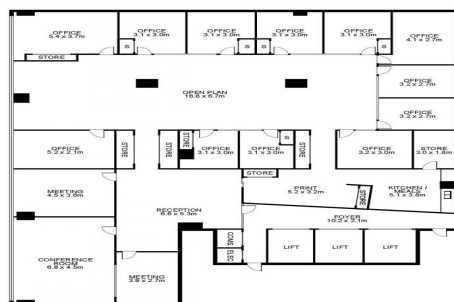


9/263 Clarence Street,
SYDNEY



Level 9/263 Clarence Street, Sydney NSW 2000

WHOLE FLOOR INVESTMENT WITH VIEWS AND 2 CAR SPACES

263 Clarence Street is a 12-storey Italian-designed office block with three lifts and basement car parking. Completed in 1976, the building is situated between the intersections of Druiitt and Market Streets and is within a short walk of Town Hall Station, QVB, Darling Harbour, Hyde Park and Haymarket.

PROPERTY:

- B-grade building whole floor on level 9
- Modern and stylish CBD building
- Excellent natural light and views overlooking Clarence Street
- Ducted A/C system & 24h security access
- Easily sub-dividable floor plan
- 2 secure car space

Offices

FOR SALE

400sqm

GUNNING

Daniel Gunning

0413 051 235

danielg@gunningre.com.au