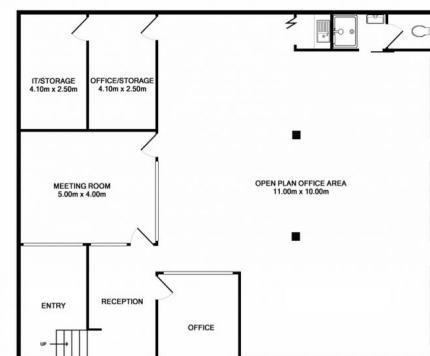




Ray White



Ray White



Ray White

2/9 Bignell Road, Moorabbin VIC 3189

CHEAPEST OFFICE AROUND - PRICE REDUCED

- First floor modern office .
- Total building area 200m2 approx.
- Currently set-up for office use however also suitable for showroom, dance school, gym / personal training studio, physiotherapists and much more (STCA).
- Features private entrance with office partitioning, heating/cooling and amenities.
- Four (4) allocated car spaces.
- Excellent for the owner occupier or investor.

Featuring:

- Heating / cooling
- On-site parking for

Offices

FOR LEASE

200sqm

Ray White

Ryan Amler

0401971622

ryan.amler@raywhite.com