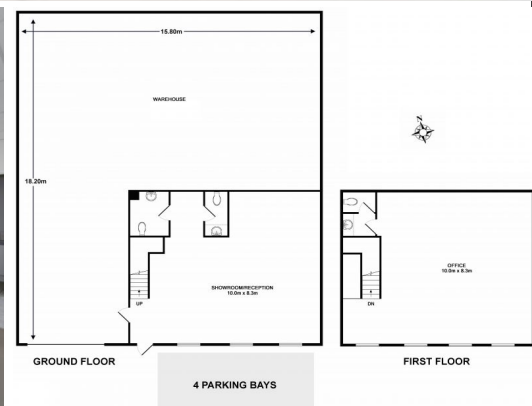




Ray White



Ray White



3/632-634 Clayton Road, Clayton South VIC 3169

MODERN WAREHOUSE/ OFFICE ? EXCEPTIONALLY WELL PRESENTED AND VACANT!

Ray White Commercial Victoria is delighted to present to market this well presented and refurbished office / warehouse in Clayton's growth corridor. Freshly painted throughout including walls and warehouse floor, the property is ready to be occupied!

The industrial estate features security gates with 24 hour access as well as a designated area for up to 40ft containers.

- Total building area 377m2 approx.
- Estate features electric security gates with 24 hour access as well as designated area for up to 40ft containers.

Industrial
FOR SALE

377sqm

Ray White

George Kelepouris

0425798677

george.kelepouris@raywhite.com

Ryan Amler

0401971622

ryan.amler@raywhite.com