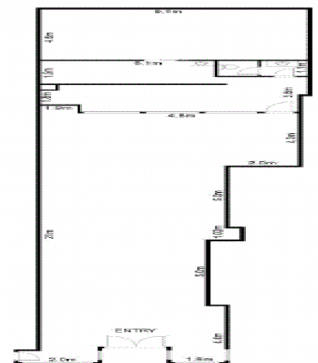
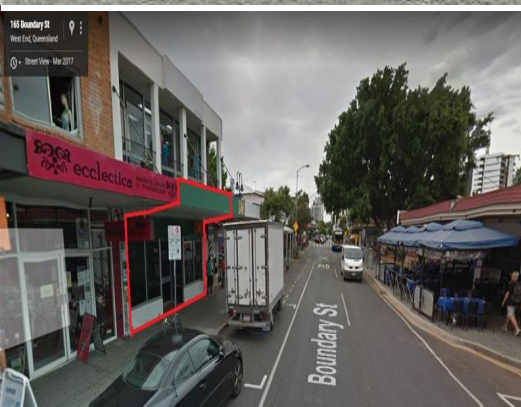




**firstnational**  
COMMERCIAL



**1/161 Boundary Street, West End QLD 4101**

## Boundary Street Goldmine!

- DC-1 District Centre Zone.
- Affluent catchment area with day and night trading potential.
- Located 200 metres from the new West Village project.
- 150 metres from the new West Village Development.

Situated right in the heart of Brisbane's vibrant Boundary Street. Formerly TAB for many years, the opportunity now exists for the right tenancy to be positioned in the middle of all the action.

177m<sup>2</sup> premises with great exposure.

Retail  
FOR LEASE  
Contact Agent  
177sqm



**firstnational**  
COMMERCIAL

**Anthony Conias**

0408 266 427

[anthony.conias@metrofn.com.au](mailto:anthony.conias@metrofn.com.au)