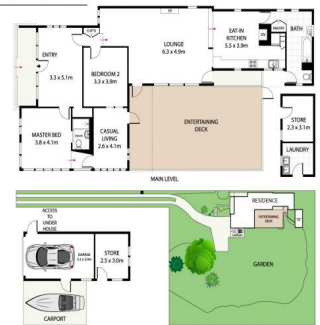




34 Nullaburra Road, Newport



**NOVAK**  
PROPERTIES

## 34 Nullaburra Road, Newport NSW 2106

### RARE, RARE, RARE - A massive 2322sqm of land

- | RARE, RARE, RARE - A massive 2322sqm of land
- | Possible 3 block subdivision - minimum lot size 700sqm
- | Zoning E4 - low residential development
- | Unlock the development potential (STCA)
- | Level & usable ? you'll never find this again
- | Private oasis in dreamy Newport
- | Envious location right by the beach

Development  
FOR SALE

#### LIFESTYLE

Seclusion & privacy surrounds thanks to large, cotton palms & a tropical rainforest perimeter providing a breathtaking back drop. Flexibility to subdivide & build up to 3 family homes (STCA). A jaw dropping location with the village of Newport & sublime beaches a simple stroll away. We cannot

**NOVAK**  
COMMERCIAL

**Kim Patterson**

0413159358

[novak@mail.inspectrealestate.com.au](mailto:novak@mail.inspectrealestate.com.au)

**Mark Novak**

0421 111 111

[novak@mail.inspectrealestate.com.au](mailto:novak@mail.inspectrealestate.com.au)