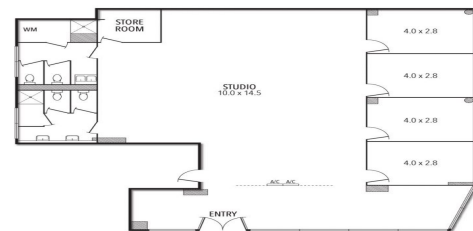




9B/112 JAMES STREET TEMPLESTOWE



9b/112 James Street, Templestowe VIC 3106

Ideal Personal Training Studio/Medical Use (STCA)

This versatile open floor plan property offers the perfect opportunity for those seeking to establish themselves in a highly demanded and well regarded retail precinct at an affordable price. Suitable to a range of uses (STCA).

- 211m2 approx.
- Partitioned offices
- 4 undercover car parks
- Zoning | Commercial 1

Retail
FOR LEASE

211sqm

Ray White®

Kristian Etherington

0400 409 833

kristian.etherington@raywhite.com