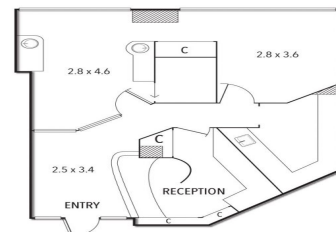


137/1 QUEENS ROAD, MELBOURNE



137/1 Queens Road, Melbourne VIC 3000

Medical Investment - CIRCA 7.% RETURN

Outstanding opportunity to secure this medical suite in this prestigious development to a long standing tenant.

- ? Medical Tenant
- ? Lease | 3 years
- ? Options | 5 years
- ? Rental | \$38,000pa net
- ? Fixed 3% increases
- ? Building area | 56m2 approx.

Healthcare
FOR SALE

56sqm

Ray White®

Brett Diston

0439365532

brett.diston@raywhite.com